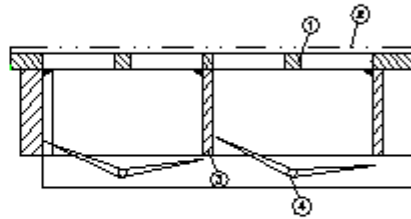
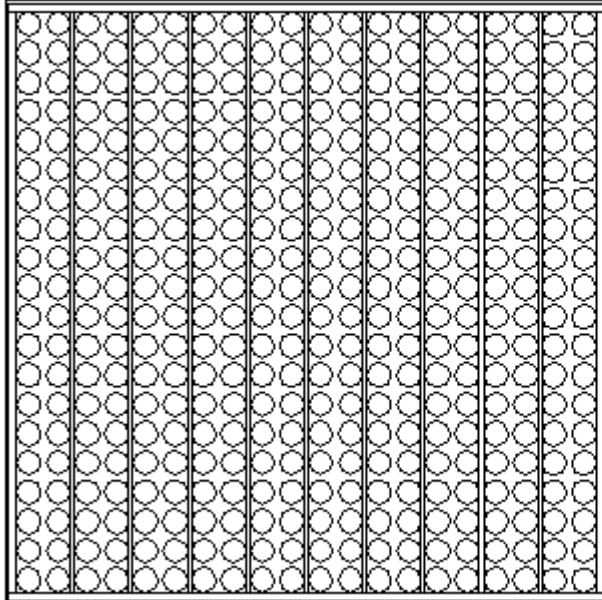


Product data sheet

Type LPL 53-FF30-5

Air conditioning panels

System sketch:



- 1 perforated steel sheet
- 2 floor covering
- 3 load bearing tube construction
- 4 optional with lamella air flow control

Panel:

Dimensions: 600 x 600 mm
 Panel thickness: Depending on floor system
 Panel weight: ~ 16,8 kg (without covering)
 Panel material: Steel, conductive powder coated

Air conditioning data:

Perforation: 400 circular holes
 Free airflow: 50 - 53 % (circular holes $\varnothing \sim 24,2$ mm)
 Air volume: ~ 2.200 m³/h per panel at pressure drop of 10 Pa
 Lamella air flow control: possible (also subsequently)

Load values:*

Concentrated load: 5.000 N
 Tested acc. to DIN EN 12825: Class 5

Electrostatic: (DIN EN 1081; DIN 54345)

Depending on floor covering R_2 or $R_{EF} > 10^5$ Ohm

Fire protection: (DIN 4102)

Building material class: A1

* The load values are depending on the test conditions, decisive is the mock-up and the size of the pressure stamp.

Volume pressure
Air conditioning panel ~ 53% with and without lamella
airflow control (LAC)

